

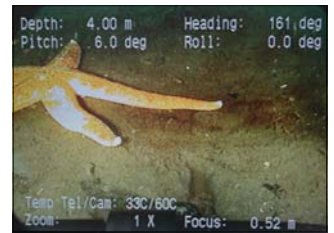
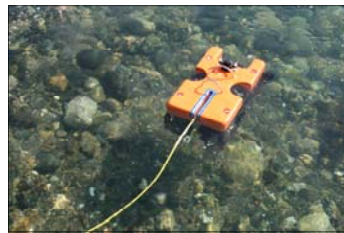
SEAMOR 300F2/4

The SEAMOR 300F2/4 with four high powered, horizontal thrusters and an extension to the frame is designed to be an open frame tooling and sensor platform ready for customization. Using an umbilical with 4 fibres and 2 twisted pairs and a portable manual reel, this powerful, industrial inspection-class mini-ROV comes ready for a wide range of underwater challenges with the added benefits of high resolution imagery, intuitive control and portability.

Fly a Seamor and understand how we are putting your expectations into our ROV's.

Focus Industries

- Aquaculture
- Forensics/SAR
- Hydro Inshore
- Marine Security
- Offshore
- Pipeline Inspection
- Potable Water
- Recreational
- Research
- Structural Analysis
- Salvage Operations
- Hull Inspection



FEATURES

- Crystal clear forward color imagery—optional HD forward view camera for broadcast quality imagery (~2,000,000 effective pixels)
- 9mm diameter umbilical with 4 fibres and 2 twisted pair
- Standard manual reel for tether management with customizable umbilical lengths
- System supplied in 4 Pelican cases for portability
- Standard Tritech Micron DST or Imagenex 852 sonar whip
- Integrated controller with 19" LCD monitor and DVR
- 180° tilting high resolution zoom camera, lights and (optional) reference lasers—all tilting together
- Aux LED lighting for task specific illumination
- Auto depth, heading and lateral inspection control
- Leak detectors and alarms for advanced warning

Benefits

- Lightweight & Portable
- High powered horizontal thrusters
- High impact open frame design
- Modular Components
- Intuitive controller
- High resolution 40x zoom color camera
- Optional reference lasers
- Lights that tilt with camera
- Customizable tooling and sensors
- Variable speed control/trim
- Remote & auto focus
- Depth rated to 1,000ft/300m

the image is **clear...**



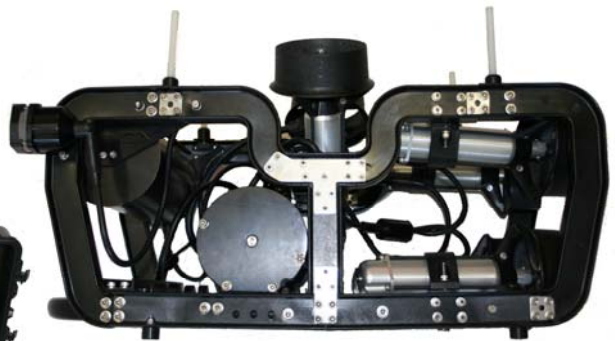
2525 McCullough Road, Unit 6&7, Nanaimo, BC, CANADA V9S 4M9
Tel : 1-250-729-8899 Fax : 1-250-729-8896 N.A. Toll Free No. : 1-888-729-8890
E-mail : sales@seamor.com

www.seamor.com

SEAMOR 300F2/4 SPECIFICATIONS

Vehicle

Size (W X L X H)	14" X 24.5" X 15" 355mm X 622mm X 381mm
Weight in air	~55lb / 25kg
Construction	Aluminium and high impact ABS
Depth Rating	1,000 ft / 300m
Speed	Up to 3 knots
Power	1000W max load



Thrusters

Horizontal	4 x 150w
Vertical/Lateral	2 x 150w
Thrust	~11 lb/5 kg per thruster



Forward Camera & Lights

Type	Color 1/4" CCD Sony Module
Sensitivity	1.5 lux min.
Resolution	460+ TV lines (380,000 effective pixels)
Focus	Manual and Auto
Iris	Auto
Zoom	40:1 (10x optical, 4x digital)
Tilt Range	180 Degree
Lights	2x50W, variable intensity, tilt with camera



Aux. Camera

Type	Sony Color 1/4" CCD
Sensitivity	<0.5 lux
Resolution	380 TV Lines
Focus	Fixed
Iris	Auto
Lights	12 high intensity LED's, ON/OFF



Umbilical

Length	550ft/165m, 1100ft/335m standard Custom lengths up to 3,000ft/900m
Diameter	0.35"/9mm
Weight in water	Neutrally buoyant in fresh
Tether Mgmt	Manual reel (std) electric (optional)

Sensors and Other

- Pressure/Depth
- Heading and Focus Length
- Leak and temperature alarms and indicator
- Thruster stall alarms and indicator
- 2 year limited warranty
- Spare thruster, tool kit, manual and general spares kit

Seamor 300F Options

- True HD FWD View Camera with ~2,000,000 effective pixels
- Up to 3 aux. cameras
- Tritech, BlueView or Imagenex sonar integration
- Tritech Micron Eco Sounder
- Sound Metrics DIDSON sonar (25 frames per second) integration
- Manipulator/Gripper
- Custom umbilical lengths up to 3000ft/915m
- Tritech, LinkQuest or Desert Star Positioning
- LYNN video optimization in controller
- CYGNUS thickness gauge
- 1000 lumen aux. LED light modules
- Extended warranty (up to 5yrs.)

The Seamor 300F2/4's open frame platform and umbilical with 4 copper, 4 multi-mode fibres and 2 twisted pairs allow this ROV to be customized to suit your application and your specific needs.